

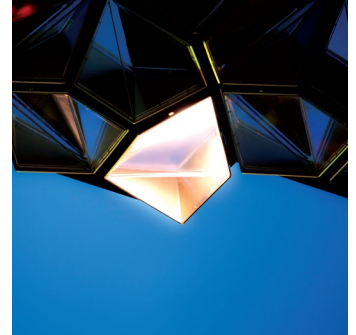


## Maple Leaf Square - York St. Pedestrian Canopy

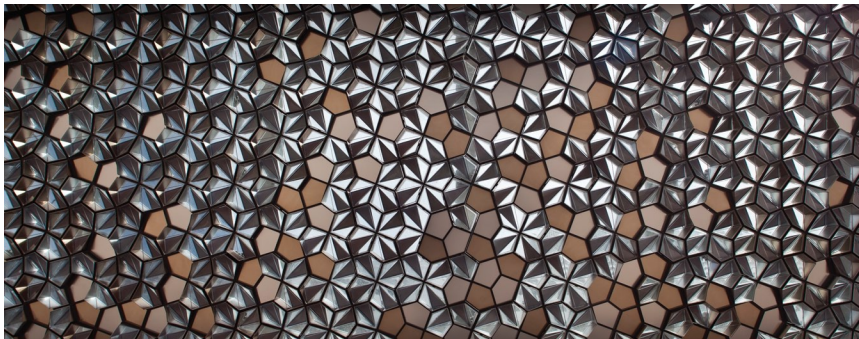
Location Toronto, Ontario  
Designer/Architect United Visual Artists Ltd.  
Duration February 2010 - Aug 2010

Scope - Soheil Mosun Limited was contracted to design build, engineer, manufacture and install this illuminated canopy and work of public art at Maple Leaf Square in downtown Toronto.

Highlights - The canopy uses modular units which are frame mounted to hold each individual LED and lens component. There are 8200 modules overall that display a synchronized pattern through use of computer controlled digital signal output. The canopy is suspended by stainless steel cabling system beneath 1/4" thick glass panels. The framework is powder coated steel and the modules are anodized aluminum extrusions with each module placed individually into the framework. The canopy is approximately 300' long and 10' wide.



*Detail of one of the lit modules at dusk*



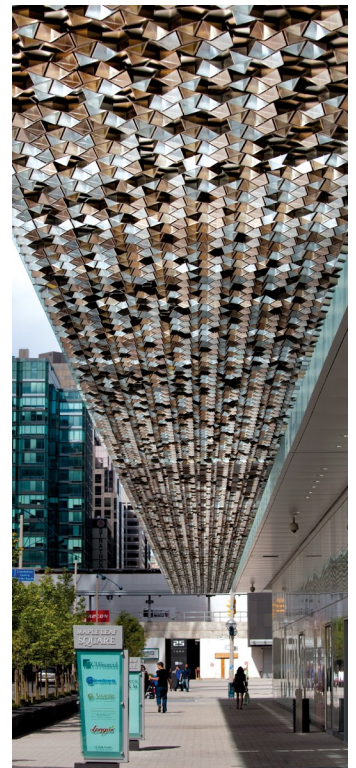
*Viewed from directly beneath, the complexity of the canopy pattern is emphasized*



*Detail of the suspension system*



*A view of the canopy functioning at night*



*A daytime view of the canopy*